



3 Bed House - Mid Terrace
located in

JR
JOSHUA REED
Estate Agents

77 Spruce Hill
Harlow
CM18 7SS



3



1



1



D

£365,000

CONTACT

23-27 Maidenhead Street
Hertford
Hertfordshire
SG14 1DW

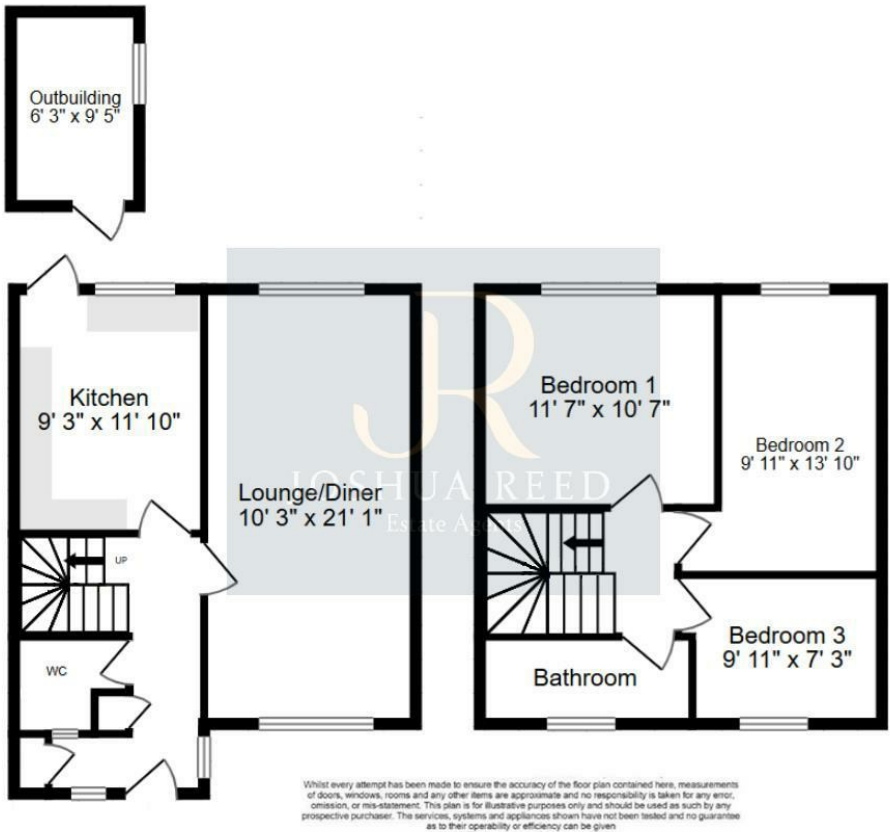
EMAIL

josh@joshua-reed.co.uk

TELEPHONE

01992 917388

www.joshua-reed.co.uk



SUMMARY

A spacious three bedroom mid-terrace family home nicely positioned in the popular area of Spruce Hill, backing onto open countryside providing beautiful views. The property features a downstairs cloakroom/WC, excellent size lounge/diner, kitchen, three well proportioned bedrooms and a modern re-fitted bathroom.

Externally, the rear garden is low maintenance and is set across two tiers providing excellent patio and decking space whilst all backing onto open fields giving a real sense of space. The house is ideally situated just a short walk away from local amenities and within easy access of the A414 & M11. Plenty of parking with the added option of renting a garage nearby from Harlow Council if required.

Book your viewing today.

DIRECTIONS

